

Donne Place – 140 sq.m.

Knightsbridge, SW1

£2.25m



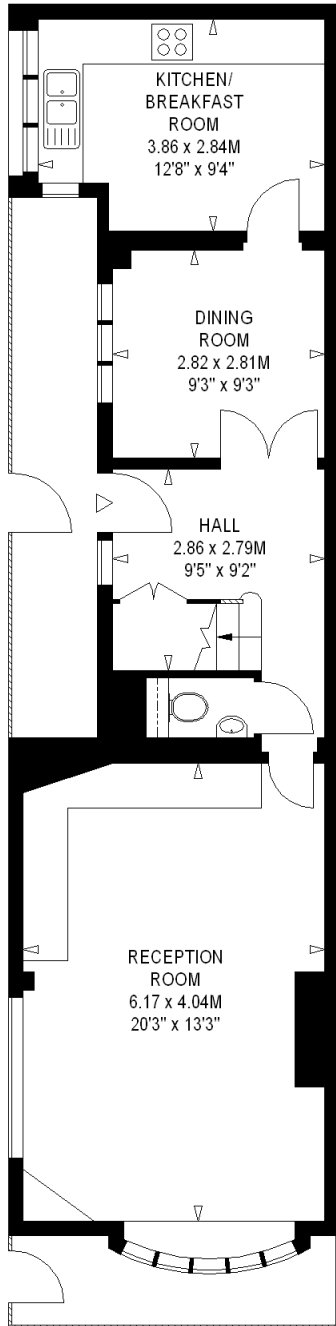
- Four bedroom double fronted end of terrace house with accommodation on three floors
- The house has been well maintained, is in good condition throughout and it has a roof terrace
- Donne Place is just off Draycott Avenue and is close to shops and restaurants of Knightsbridge and Sloane Square
- Freehold

Arbitrage – Real Estate investments in London

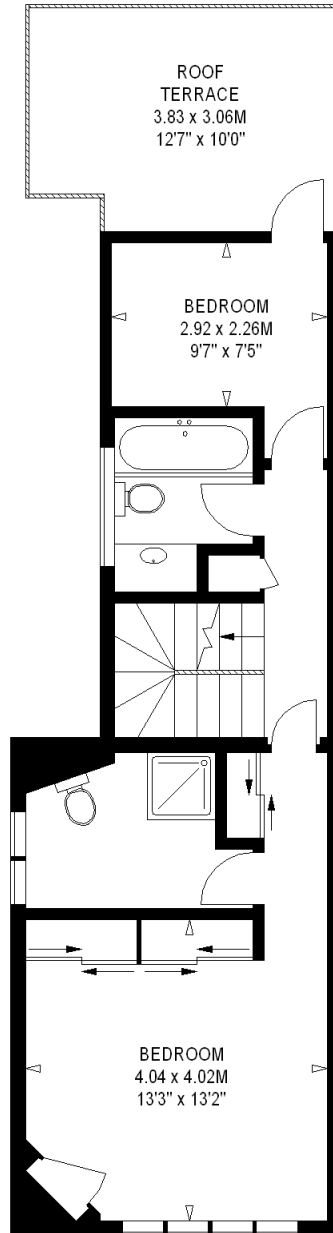


Arbitrage – Real Estate investments in London

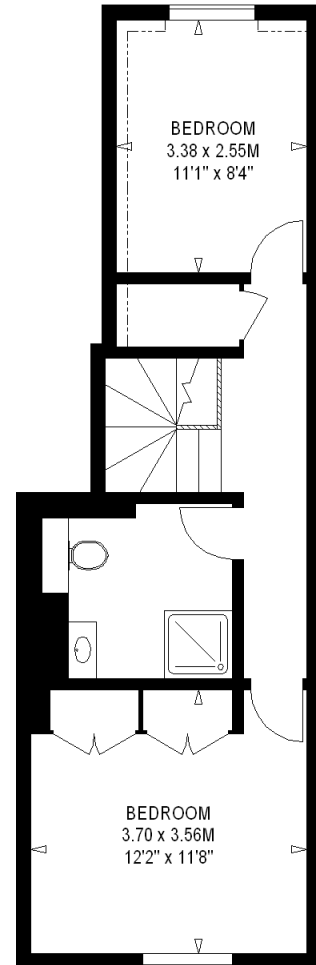
tel. + 44 7803 921934 or + 44 7768 142792; email: info@arbitragegroup.co.uk
web: www.arbitragegroup.co.uk



GROUND FLOOR



FIRST FLOOR

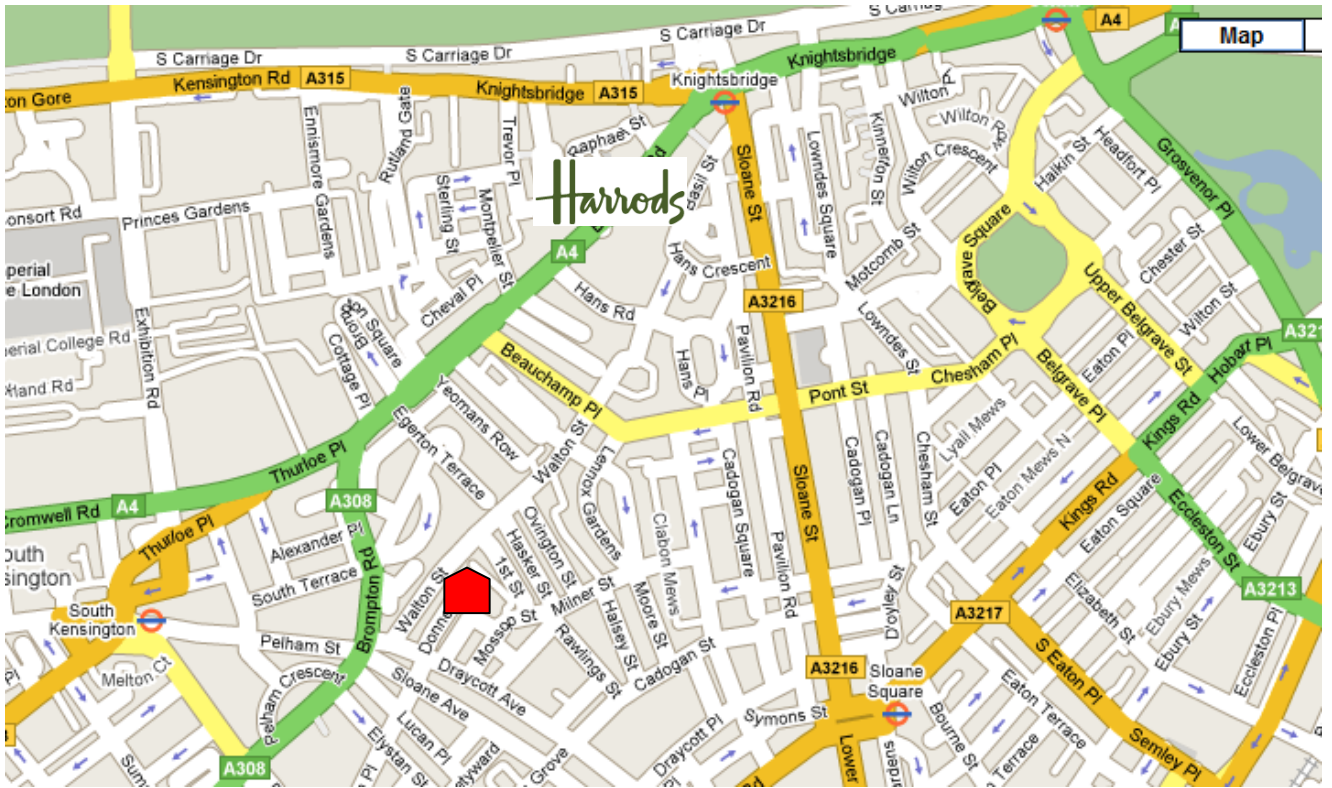


SECOND FLOOR

Arbitrage – Real Estate investments in London

Knightsbridge

Location map



Financial details

Financial details		£
Purchase price		2,250,000
Additional costs		
- Lawyer fees	0.5%	11,250
- Stamp duty (tax)	4.0%	90,000
- Agent fees	2.0%	45,000
		<u>146,250</u>
Total cash outlay		<u>2,396,250</u>
Average annual price increase in this area of London has been 15%		

Underground map



Arbitrage – Real Estate investments in London